



# The 2023 Snowmass Bred Maiden Sale







# Better Information Produces Better Results. That's Why We Provide It



**Large-sample OFDA 100 grid histograms** that capture variability across the entire blanket, not just in a few staples at the sweet spot mid-side.



**EPD rankings** to help you understand the likely performance characteristics of our animals on your farm, not just on ours.



**Base coat color genotyping** so you can choose the best animals to produce crias in the colors you want.



**Recent weights** to help you assess size and growth characteristics relative to similar-aged animals on your farm.



**High-accuracy information on our service sires** whose genetics are included in these packages so you have a running start planning for the next generation.



# Bred Maiden Sale Structure

- Females are available for sale on a first come, first serve basis until September 1, 2023.
- All females come with a fertility guarantee and our standard contractual protections. See page 25 for details.
- Female listings are color-coded and priced as follows. Terms are available.
  - **Purple: \$15,000**
  - **Blue: \$12,000**
  - **Bronze: \$9,000**
  - **Green: \$7,000**
- Contact Lynn or Susanne to purchase:
  - [Lynn@lcfalpacas.com](mailto:Lynn@lcfalpacas.com)
  - 917-952-5184
  - [Susanne@lcfalpacas.com](mailto:Susanne@lcfalpacas.com)
  - 914-318-0893







# How To Read A Sale Listing

**Listing Text Color** tells you the price of the female

The female's **location** is indicated by a C (Canastota) or an N (North Salem.)

## 1. Snowmass Purely Fictitious (C)

Sire: Snowmass Fictione  
Dam: Snowmass Nonesset  
DOB: 8/14/20  
Color: White Recent Wt 110 lbs  
Color Genotype: ee AA

**Service Sire**  
**Snowmass Imaginarius**  
Color Genotype: Ee Aa  
Status: Confirmed  
Due Date: July 2024

	AFD	SD	CV	%>30	SL	FW
23 Grid Hist	19.2	4.1	21.3	1.5	131	11.2
23 EPD PR	1%	4%		10%	77%	7%

**Grid histograms** are based on analysis of combined shoulder, mid-side and hip samples and capture more of the variation in the fleece than do histograms based on the mid-side alone.

Where the maiden was old enough to have them calculated, her **EPD trait percentile rankings** are shown.

**Relaxed Staple Length** is shown in millimeters and fleece weight is shown in pounds.

Breeding notes are also provided. And don't forget you can review the entire maiden group at a glance via the tables on the following pages.



### COLOR GENOTYPING:

Genotypes for **MC1R** are denoted with E's (capital or small according to the mutations present) and genotypes for **ASIP** are denoted with A's. Visit the American Alpaca Journal page of [Snowmassalpaca.com](http://Snowmassalpaca.com) to read articles on color genotypes in Issues 6 and 7 or contact Lynn and Susanne to learn more.





# The Maiden Group At A Glance

Use the tables here to quickly compare the sale lots based on what we believe are their notable genotypic strengths based on the data we have collected for them and their ancestors. We have used the same price color-coding here so that it is easy to scan the group for animals with particular strengths at a given price point. “Bred For Color” means a 50 to 100% chance of non-white or -light offspring from the current breeding. More specific detail appears in the individual animal listings.

Lot Number	Bred for Color	Covers Black	No Dilution	++ Fineness	++ SSL	++ Uniformity	High Curv /Crimp	++ Density	++ Curb Appeal
1									
2									
3									
4									
5									
6									
7									
8									
9									
10									
11									
12									
13									
14									
15									
16									





# The Maiden Group At A Glance

Lot Number	Bred for Color	Covers Black	No Dilution	++ Fineness	++ SSL	++ Uniformity	High Curv /Crimp	++ Density	++ Curb Appeal
17									
18									
19									
20									
21									
22									
23									
24									
25									
26									
27									
27									
29									
30									
31									
32									



## 1. Snowmass Crystalina (C)

Sire: Snowmass Loro Piana  
 Dam: Snowmass Harmonie  
 DOB: 9/20/21  
 Color: WH Spring Wt: 136.5  
 Color Genotype: ee AA

**Service Sire: Snowmass  
 Marvelous Oblivion**  
 Color Genotype: ee Aa3  
 Status: Breeding  
 Due Date: TBD

	AFD	SD	CV	%>30	SL	FW
23 Grid Hist	19.2	4.1	21.3	1.5	131	11.2
22 EPD PR	1%	4%		10%	77%	7%



**Breeding Notes:** You may be wondering if Crystalina looks as good in real life as she does on paper. The answer is yes. This is one of our best white females from the 2021 production year and we're breeding her to the many-X champion Snowmass Marvelous Oblivion for an elite white cria. The point of the maiden sale is to give you access to the core of our production herd and, well, here she is.... The COI on the pairing is 6.1%.

## 2. Snowmass Enchanted Lace (N)

Sire: Snowmass Enchanted Wave  
 Dam: Snowmass Touching Lace  
 DOB: 8/3/21  
 Color: MB Spring Wt: 117.5  
 Color Genotype: EE AA

**Service Sire: Snowmass  
 Divine Optics**  
 Color Genotype: ee a1a3  
 Status: Breeding  
 Due Date: TBD

	AFD	SD	CV	%.30	SL	FW
23 Grid Hist	20.3	4.7	23.1	2.5	118	9.7
22 EPD PR	30%	48%		45%	12%	2%



**Breeding Notes:** Enchanted Wave routinely makes robustly framed females like Enchanted Lace and imparts the fineness, length and well-organized structure you see in this maiden's fleece as well. Enchanted Lace does not carry dilution and so should produce only dark crias – this was an important factor in our choice of her service sire Snowmass Divine Optics. We like that you will get a fawn or darker cria from this pairing and that the cria will cover black via its sire. Divine Optics is one of the finest males we have working with exceptional structure and brightness. COI 4.5%.



### 3. Accoyo America Cima (C)

Sire: Accoyo America Dolomite  
 Dam: Accoyo America Cinco De Mayo  
 DOB: 6/8/21  
 Color: BG Spring Wt: 116.7  
 Color Genotype: ee AA

**Service Sire: Snowmass  
 Heavens Paramount**  
 Color Genotype: EE AA  
 Status: Breeding  
 Due Date: TBD

	AFD	SD	CV	%>30	SL	FW
23 Grid Hist	20.0	3.7	18.3	0.5	112	5.5
22 EPD PR	5%	2%		13%	97%	20%



**Breeding Notes:** This female has one of the nicest fleeces in the sale – fine, super uniform (remember that's a grid histogram!) and bright with dense staples. We decided to breed her for a fawn show offspring and chose a service sire Snowmass Heavens Paramount, who has produced very typey offspring with the head style, bone and coverage that are favored in the ring. COI 0.1%. Cima has a fawn spot on her neck, shown in her photo.

### 4. Snowmass Andean Promise (C)

Sire: Snowmass Fortunato XX  
 Dam: Snowmass Andean Hope  
 DOB: 8/12/21  
 Color: MF Spring Wt: 117.3  
 Color Genotype: Ee AA

**Service Sire: Snowmass  
 Royal Wave**  
 Color Genotype: Ee Aa1  
 Status: Breeding  
 Due Date: TBD

	AFD	SD	CV	%.30	SL	FW
23 Grid Hist	20.4	4.1	20.2	2.3	125	8.5
22 EPD PR	5%	10%		14%	87%	21%



**Breeding Notes:** There is a lot to like here, and this female's sire stands in Europe now so we can't offer many with the combination of genetic diversity and strength represented in her pedigree. We wanted to add some incremental staple length and fleece weight to this female's offspring and so chose as her service sire the gorgeous fawn Snowmass Royal Wave, whose crias are now dropping right and left and making us very happy. You could get any color from white to brown or rose grey from this pairing. The cria's COI will be 2.2%



## 5. Snowmass Sweet Brilliance (C)

Sire: Snowmass Brilliance Beyond  
 Dam: Snowmass Sweet Hallmark  
 DOB: 10/2/21  
 Color: WH Spring Wt: 117.5  
 Color Genotype: ee AA

**Service Sire: Snowmass  
 Lover's Spartan**  
 Color Genotype: Ee AA  
 Status: Breeding  
 Due Date: TBD

	AFD	SD	CV	%>30	SL	FW
23 Grid Hist	20.9	4.7	22.2	3.2	120	5.7
22 EPD PR	10%	7%		13%	38%	21%



**Breeding Notes:** Sweet Brilliance impressed us with her solid, squared off frame and attractive head along with a stylish fleece. These traits and the quality of her fleece genetics made her worthy to breed to Snowmass Lover's Spartan. A true young superstar on our herdsire row, Lover's Spartan's first group of crias racked up numerous champion and even judges' choice awards as juveniles. You will get a white or fawn cria from this paring. The COI of this breeding is 2.7%.

## 6. Snowmass Enchanted Haumea (N)

Sire: Snowmass Enchanted Wave  
 Dam: Snowmass Pele  
 DOB: 6/18/21  
 Color: DF Spring Wt: 109.0  
 Color Genotype: Ee Aa1

**Service Sire: Snowmass  
 Seven Solutions**  
 Color Genotype: Ee AA  
 Status: Breeding  
 Due Date: TBD

	AFD	SD	CV	%.30	SL	FW
23 Grid Hist	18.3	3.4	18.8	0.5	128	5.7
22 EPD PR	3%	7%		17%	9%	15%



**Breeding Notes:** We're super excited when we can put together in one animal the genotypes for both exceptional fineness and outstanding staple length, as is true for Enchanted Haumea. The fact that she covers black with an a1 allele is also a plus. But we didn't go for black with her first breeding – we chose to put her with one of our rising sires, the fawn Sub-Seven son Snowmass Seven Solutions. His fleece is absolutely outstanding! COI 2.2%. You could get any color cria from white to brown or rose grey. Haumea has a scar in her right eye that does not appear to affect her vision.

## 7. Snowmass Heavens Serenity (C)

Sire: Snowmass Lover's Spartan  
 Dam: Snowmass Golden Velvet  
 DOB: 9/22/21  
 Color: LB Spring Wt: 113.1  
 Color Genotype: Ee AA

**Service Sire: Snowmass  
 Marvelous Oblivion**  
 Color Genotype: ee Aa3  
 Status: Breeding  
 Due Date: TBD

	AFD	SD	CV	%>30	SL	FW
23 Grid Hist	20.2	4.7	23.0	2.6	115	NA
22 EPD PR	11%	10%		14%	90%	7%



**Breeding Notes:** With little room to improve on this robust female's frame, size, and presence, we concentrated on pairing her with a male with the most complementary and advanced fleece traits. We choose the 8x champion white Oblivion son Snowmass Marvelous Oblivion who carries an ee Aa3 base coat color genotype and will bring incremental density, structure and brightness to this already elite female. The COI on this pairing is 4.0%.

## 8. Snowmass Legendary Love Song (C)

Sire: Snowmass Legendary  
 Dam: Moonshadow's Wind Song  
 DOB: 7/16/21  
 Color: WH Spring Wt: 141.8  
 Color Genotype: ee Aa3

**Service Sire: Snowmass  
 Bernacelli**  
 Color Genotype: ee AA  
 Status: Breeding  
 Due Date: TBD

	AFD	SD	CV	%.30	SL	FW
23 Grid Hist	24.6	4.5	18.1	8.5	129	10.9
22 EPD PR	14%	4%		22%	54%	41%



**Breeding Notes:** We are really impressed by the micron uniformity this female is exhibiting in her grade 3 fleece and pleased with the relaxed 5" (129 mm) length of her yearling fleece. We moved to lock in prepotency for uniformity and staple length in her offspring with a breeding to Snowmass Bernacelli, who also excels in these traits and brings further improved genetics for density and fleece weights. While cutting an almost 11 lb blanket is impressive, we think she'll produce even better in her Bernacelli cria. COI 1.7%.



## 9. Snowmass Mustang Sally (C)

Sire: Snowmass Enchanted Wave  
 Dam: Snowmass Sizlin Sally  
 DOB: 9/17/21  
 Color: DF Spring Wt: 137.1  
 Color Genotype: Ee Aa1

**Service Sire: Snowmass  
 Royal Impact**  
 Color Genotype: ee Aa1  
 Status: Breeding  
 Due Date: TBD

	AFD	SD	CV	%>30	SL	FW
23 Grid Hist	24.7	4.9	19.8	10.2	135	10.5
22 EPD PR	12%	12%		25%	18%	1%



**Breeding Notes:** The cria from the pairing of Mustang Sally to Royal Impact could be any color from white to black or grey. What we're confident about is that it will have a long-stapling, dense fleece with better than average brightness and uniformity of micron across its frame. This female also presents a nice feminine type that we think will be complemented by Royal Impact's heavy frame and wedge-shaped head. Genetic diversity is an added plus with this pairing, which has a COI of 2.1%

## 10. Snowmass Mystical Hope (C)

Sire: Snowmass Majestic Paramount  
 Dam: Snowmass Incan Divinity  
 DOB: 10/2/21  
 Color: DF Spring Wt: 120.5  
 Color Genotype: Ee Aa3

**Service Sire: Snowmass  
 Royal Wave**  
 Color Genotype: Ee Aa1  
 Status: Breeding  
 Due Date: TBD

	AFD	SD	CV	%.30	SL	FW
23 Grid Hist	22.6	5.6	24.9	8.6	121	10.3
22 EPD PR	27%	26%		28%	99%	2%



**Breeding Notes:** Mystical Hope has a grey nose and dark points and these phenotypic traits made us think it is likely that she has inherited her sire's roan genetics. Majestic Paramount is not roan himself but has produced some incredibly impressive modern greys from solids. We have found the same to be true in the sire line of the service sire we chose for Mystical Hope, Snowmass Royal Wave. He also brings outstanding fineness and a color genotype that also covers black, just as Mystical Hope's does. This should be an exciting 2024 cria. COI 5.5%

## 11. Snowmass Polar Breeze (C)

Sire: Accoyo America Polar Storm  
 Dam: Snowmass Touche Me  
 DOB: 7/30/21  
 Color: WH Spring Wt: 139.8  
 Color Genotype: ee AA

**Service Sire: Snowmass  
 Glacial Symphony**  
 Color Genotype: ee AA  
 Status: Breeding  
 Due Date: TBD

	AFD	SD	CV	%>30	SL	FW
23 Grid Hist	20.8	4.1	19.7	1.5	138	9.5
22 EPD PR	9%	12%		19%	19%	10%



**Breeding Notes:** The generous staple length on Polar Breeze impresses even in a maiden group full of longer-stapling animals, and we like its brightness and weight also. We're locking length down with the breeding to Glacial Symphony and also expect a further improvement in fineness and primary to secondary micron uniformity – he really excels in both respects. This cria will be a high curvature white with an excellent head style and a coefficient of inbreeding of 0.3%.

## 12. Snowmass Enchanted Memories (C)

Sire: Snowmass Enchanted Wave  
 Dam: Snowmass Royal Memories  
 DOB: 6/27/21  
 Color: DB Spring Wt: 110.2  
 Color Genotype: Ee a1a2

**Service Sire: Snowmass  
 Best Bet**  
 Color Genotype: Ee Aa3  
 Status: Breeding  
 Due Date: TBD

	AFD	SD	CV	%.30	SL	FW
23 Grid Hist	22.2	5.5	24.5	6.0	106	8.8
22 EPD PR	10%	23%		25%	46%	39%



**Breeding Notes:** This female draws the eye with her beautiful head, ample coverage and sturdy frame. We took her to the amazing Snowmass Best Bet because we wanted more staple length and improved micron uniformity in her cria – and we're going to get it. While you could get any base coat color here the cria will definitely cover black, and we think you have better than a one-third chance of a black fleeced offspring from this pairing. COI 4.3%



## 13. Snowmass Oblivion's Silk (C)

Sire: Snowmass Oblivion

Dam: Snowmass Silken Legend

DOB: 9/3/21

Color: BG Spring Wt: 95.3

Color Genotype: ee Aa3

**Service Sire: Snowmass**

**Best Oracle**

Color Genotype: ee AA

Status: Breeding

Due Date: TBD

	AFD	SD	CV	%>30	SL	FW
23 Grid Hist	19.7	4.3	21.9	1.7	129	6.4
22 EPD PR	10%	1%		13%	58%	6%



**Breeding Notes:** The spectacular Snowmass Loro Piana son Snowmass Best Oracle has had one of the best fleeces on the farm in each of the last couple of years, and he's who we chose to use with this beautiful Oblivion daughter for her first cria. While Oblivion's Silk covers black with an a3 allele, this breeding will produce a white or beige cria. Best Oracle (known as Best Orgle around the farm) will bring incremental fineness and density to this pairing, which should result in a highly competitive show offspring. The coefficient of inbreeding for the pairing is 3.9%.

## 14. Snowmass Victorious Hope (C)

Sire: Snowmass Rock Solid

Dam: Snowmass Invincibly Victorious

DOB: 8/11/21

Color: DF Spring Wt 123.7

Color Genotype: Ee AA

**Service Sire: Snowmass**

**Lover's Spartan**

Color Genotype: Ee AA

Status: Breeding

Due Date: TBD

	AFD	SD	CV	%.30	SL	FW
23 Grid Hist	23.1	4.4	18.8	4.0	111	9.1
22 EPD PR	12%	20%		16%	78%	6%



**Breeding Notes:** Females like this are our bread and butter. With excellent fleece traits in place we just wanted to add a little type to her offspring and so we chose to breed her to Snowmass Lover's Spartan. Not only have we found that he puts remarkable fleeces on his crias but they have all had great head styles as well. The cria from these two will have a base coat color falling anywhere from white to brown with best odds for fawn. COI 3.0%

## 15. Snowmass Global Dancer (C)

Sire: Snowmass Global Solutions

Dam: Snowmass Rose Dancer

DOB: 5/18/21

Color: WH Spring Wt: 122.9

Color Genotype: ee AA

Service Sire: Snowmass

Fortune's Magic

Color Genotype: EE Aa3

Status: Breeding

Due Date: TBD

	AFD	SD	CV	%>30	SL	FW
23 Grid Hist	21.6	4.4	20.3	3.2	118	7.0
22 EPD PR	7%	3%		13%	1%	6%



**Breeding Notes:** This female is being bred for a fawn or light brown 2024 cria. Her service sire Fortune's Magic is not one you have seen before now – he is a huge asset that was revealed in part by color genotyping. While we have always loved this brown male's really dense, fine, well-structured fleece, learning that he does not carry dilution made him a go-to choice to produce colored crias from our top white lines. We expect a very showy cria from this pairing. COI 0.8%. Global Dancer has a fawn spot in her blanket, visible in the picture above.

## 16. Snowmass Enchanted Sky XX (C)

Sire: Snowmass Enchanted Wave

Dam: Snowmass Scarlet Sky

DOB: 9/13/21

Color: BG Spring Wt: 130.5

Color Genotype: ee AA

Service Sire: Snowmass

Royal Impact

Color Genotype: ee Aa1

Status: Breeding

Due Date: TBD

	AFD	SD	CV	%.30	SL	FW
23 Grid Hist	22.6	4.6	20.2	3.3	144	8.4
22 EPD PR	6%	8%		11%	75%	3%



**Breeding Notes:** This female is like getting the entire Snowmass breeding program in one lovely package. She has a spectacular pedigree, with Matrix and Best Man each appearing twice along with a host of other big names. Not surprisingly, she has an excellent genotype for producing elite-fleeced offspring with a balanced trait profile. We chose to breed her to Royal Impact because he brings a macho type along with incremental density and fleece weight. You'll have a very prepotent white cria from this pairing with a COI of 8.1%



## 17. Snowmass Heavenly Touch (C)

Sire: Snowmass Heavens Paramount  
 Dam: Snowmass Summer's Touche  
 DOB: 11/8/21  
 Color: LB Spring Wt: 127.9  
 Color Genotype: NR

**Service Sire: Snowmass  
 Best Bet**  
 Color Genotype: Ee Aa3  
 Status: Breeding  
 Due Date: TBD

	AFD	SD	CV	%>30	SL	FW
23 Grid Hist	19.33	4.5	23.5	2.3	139	10.2
22 EPD PR	12%	18%		17%	99%	21%



**Breeding Notes:** It's hard to improve on your best females, so we thought hard about the service sire for Heavenly Touch. We went with Best Bet to help solidify her offspring's genotype for staple length – Heavenly Touch herself is producing a massive amount of growth but this was not a particular strength of her ancestors. What has been common thread among them is a show-style phenotype and lots of density. The COI for this very compelling pairing of Heavenly Touch and Best Bet is 2.3%

## 18. Snowmass Crystal Heart (C)

Sire: Snowmass Crystal Code  
 Dam: Snowmass Heaven's Heart  
 DOB: 9/6/21  
 Color: WH Spring Wt: 127.6  
 Color Genotype: ee AA

**Service Sire: Accoyo  
 America Morpheus**  
 Color Genotype: ee AA  
 Status: Breeding  
 Due Date: TBD

	AFD	SD	CV	%.30	SL	FW
23 Grid Hist	20.8	4.1	20.0	2.0	121	9.6
22 EPD PR	6%	8%		11%	75%	3%



**Breeding Notes:** Crystal Heart has outstanding EPDs, but her service sire, the Snowmass Defiance son Accoyo America Morpheus is really something else, especially when it comes to his genetics for uniformity (top 0.05% -- you read that right!) and fineness (top 1%). He's really dense too with a super high curvature, high frequency crimp style. These two should make an extraordinary white cria with a COI of just 1.8%. Crystal Heart has a brown spot on her head, visible in the photo above.

## 19. Snowmass Moonlight Diamond (C)

Sire: Snowmass Rock Solid  
 Dam: Snowmass Blue Moonlight  
 DOB: 10/15/21  
 Color: DB Spring Wt: 127.8  
 Color Genotype: Ee a1a3

**Service Sire: Snowmass  
 Royal Wave**  
 Color Genotype: Ee Aa1  
 Status: Breeding  
 Due Date: TBD

	AFD	SD	CV	%>30	SL	FW
23 Grid Hist	25.6	6.7	25.9	19.6	107	10.7
22 EPD PR	36%	34%		31%	94%	8%



**Breeding Notes:** Moonlight Diamond has a black ASIP genotype (a1a3) and so her crias will always cover black. Bred to Royal Wave she has reasonable odds of producing a black or silver grey offspring, though any base coat color is possible with this pairing. Royal Wave brings a lot of incremental fineness and uniformity to the pairing – Moonlight Diamond will contribute excellent bone and fleece weight. This is a nice genetic package with a COI for the pairing of 1.9%

## 20. Snowmass Spindrift (N)

Sire: Snowmass Enchanted Wave  
 Dam: Amber Autumn Irish Mist  
 DOB: 5/30/21  
 Color: WH Spring Wt: 133.2  
 Color Genotype: ee Aa1

**Service Sire: Estates  
 Sakima's Braxton**  
 Color Genotype: EE a2a2  
 Status: Breeding  
 Due Date: TBD

	AFD	SD	CV	%.30	SL	FW
23 Grid Hist	20.3	5.3	25.9	3.0	98	NA
22 EPD PR	17%	17%		28%	23%	10%



**Breeding Notes:** We never would have done this before we started color genotyping: We are breeding this beautifully-fleeced white female to the 12x black champion Estates Sakima's Braxton. Because we color genotyped her we know Spindrift covers black and because we genotyped Braxton we know he does not carry dilution and will not produce white or light offspring. We believe you have a 50% chance of a black cria and a 50% chance of a dark fawn or brown, The cria's COI will be 0.2%.



## 21. Snowmass Silky Moonlight (C)

Sire: Snowmass Elite Symphony  
 Dam: Snowmass Midnight Moonlight  
 DOB: 10/2/21  
 Color: WH Spring Wt: 115.9  
 Color Genotype: ee Aa3

**Service Sire: Snowmass  
 Fortune's Magic**  
 Color Genotype: EE Aa3  
 Status: Breeding  
 Due Date: TBD

	AFD	SD	CV	%>30	SL	FW
23 Grid Hist	20.1	3.9	19.6	1.0	126	7.8
22 EPD PR	21%	9%		26%	73%	12%



**Breeding Notes:** Silky Moonlight's sire Elite Symphony and his offspring are so important to our efforts to produce animals with bright, exceptionally fine, ultra uniform fleeces. We decided to use Silky Moonlight to help further infuse these traits in our color breeding effort by breeding her to Fortune's Magic, who does not carry dilution and as a result should only produce colored offspring. Although black is a theoretical possibility from this pairing we believe it is unlikely and expect you will get a fawn or brown cria with a coefficient of inbreeding of 0.4%.

## 22. Snowmass Divine Brilliance (C)

Sire: Snowmass Brilliance Beyond  
 Dam: Snowmass Divine Pacabells  
 DOB: 6/26/21  
 Color: WH Spring Wt: 108.9  
 Color Genotype: ee AA

**Service Sire: Snowmass  
 Marvelous Oblivion**  
 Color Genotype: ee Aa3  
 Status: Breeding  
 Due Date: TBD

	AFD	SD	CV	%.30	SL	FW
23 Grid Hist	22.6	4.2	18.7	4.1	130	11.8
22 EPD PR	12%	8%		22%	3%	4%



**Breeding Notes:** This female was perfectly named – Divine Brilliance has such a bright fleece! We attribute it to her line-breeding on the Snowmass Best Man line. We've chosen to breed her to Snowmass Marvelous Oblivion for a competitive white cria that will have a COI of 6.2%. Going forward her superior genotype for micron-adjusted uniformity, staple length and fleece weight can help you produce elite crias in darker colors too.

## 23. Snowmass Silky Shiraz (C)

Sire: Snowmass Global Solutions  
 Dam: Snowmass Kahuna's Silky Syrah  
 DOB: 7/18/21  
 Color: LB Spring Wt 134.8  
 Color Genotype: Ee AA

**Service Sire: Snowmass  
 Fortune's Magic**  
 Color Genotype: EE Aa3  
 Status: Breeding  
 Due Date: TBD

	AFD	SD	CV	%>30	SL	FW
23 Grid Hist	19.2	4.7	24.3	2.2	123	11.7
22 EPD PR	7%	4%		14%	7%	17%



**Breeding Notes:** Silky Shiraz and her service sire Snowmass Fortune's Magic will produce a fawn or brown 2024 cria. We love the genotype for fineness that will come from this pairing and you should get plus-plus structure as well. Silky Shiraz also brings the valued heavy-boned, high-capacity frame of her sire – this is the phenotype we like to see in our dams of future sires. The COI of this pairing is 1.3%

## 24. Snowmass Velvet Winds

Sire: Snowmass Velvet Impressions  
 Dam: Snowmass Silent Winds  
 DOB: 10/27/21  
 Color: BG Spring Wt 133.2  
 Color Genotype: ee Aa3

**Service Sire: Snowmass  
 Andean Divinity**  
 Color Genotype: EE AA  
 Status: Breeding  
 Due Date: TBD

	AFD	SD	CV	%.30	SL	FW
23 Grid Hist	18.4	4.0	21.5	0.7	144	8.0
22 EPD PR	7%	7%		7%	67%	20%



**Breeding Notes:** Velvet Winds' first job for you will be to produce a beautiful Andean Divinity cria – we've been seeing both dark solid colors and modern greys from him and think you could get either with this pairing. But she also brings in pedigree diversity on her dam's side and may be a particularly good choice for you if you are already working with Snowmass genetics in your herd. Stunning fleece here too no doubt. The COI on her 2024 breeding is 0.9%.



## 25. Snowmass Polar Luminaire (C)

Sire: Accoyo America Polar Storm  
 Dam: Snowmass Luminous Legend  
 DOB: 9/16/21  
 Color: WH Spring Wt: 132.4  
 Color Genotype: ee Aa1

**Service Sire: Snowmass  
 Elite Symphony**  
 Color Genotype: ee AA  
 Status: Breeding  
 Due Date: TBD

	AFD	SD	CV	%>30	SL	FW
23 Grid Hist	21.6	5.0	23.0	3.8	144	9.4
22 EPD PR	7%	5%		12%	5%	1%



**Breeding Notes:** We don't need less high quality alpaca fiber in the marketplace, we need more. And this is the female that will both provide ample quantities of this fiber herself and produce offspring that do the same. Note the 144 mm (5.7 inch) relaxed staple length of her yearling fleece and that heavy shear weight. The breeding to Snowmass Elite Symphony will shift the offspring a bit finer (environment held constant) but also help lock in the genotype for fast fleece growth and heavy shear weights. COI 0.6%

## 26. Snowmass Theia (C)

Sire: Snowmass Standing Royalty  
 Dam: Snowmass Gaia  
 DOB: 10/22/21  
 Color: BG Spring Wt: 141.3  
 Color Genotype: ee AA

**Service Sire: Snowmass  
 Bernacelli**  
 Color Genotype: ee AA  
 Status: Breeding  
 Due Date: TBD

	AFD	SD	CV	%.30	SL	FW
23 Grid Hist	21.6	4.3	20.1	2.5	115	NA
22 EPD PR	19%	3%		17%	65%	5%



**Breeding Notes:** This beautifully-fleeced Snowmass Oblivion grand-daughter is offered at a heavily discounted price because of the brown spot you see in her blanket. But her fleece quality is such that we wanted to breed her for an outstanding white cria nonetheless. That's why we choose the multi-champion Loro Piana son Snowmass Bernacelli for her service sire. He's producing animals that don't just have great fleeces but also sport the head styles and coverage needed for top show awards. The COI on this pairing is 6.6%.

## 27. Snowmass Crystal Charisma (C)

Sire: Snowmass Crystal Code  
 Dam: Snowmass Velvet Charisma  
 DOB: 10/24/21  
 Color: DF Spring Wt: 110.3  
 Color Genotype: Ee AA

**Service Sire: Snowmass  
 Marvelous Oblivion**  
 Color Genotype: ee Aa3  
 Status: Breeding  
 Due Date: TBD

	AFD	SD	CV	%>30	SL	FW
23 Grid Hist	19.3	4.6	23.8	1.0	124	8.5
22 EPD PR	4%	10%		12%	93%	27%



**Breeding Notes:** This female's pedigree is loaded with our finest sires in color and white! From the perspective of fleece quality she was more than worthy of taking to a top white sire like Marvelous. You have a 50% chance of a white cria from this pairing and a 50% chance of fawn or light brown but we don't think you'll care what color it is when you see its fleece. The COI for this breeding is 0.9%.

## 28. Snowmass Daria (N)

Sire: Snowmass D'Angelo  
 Dam: Accoyo America Delphi AC020  
 DOB: 7/24/21  
 Color: WH Spring Wt: 146.0  
 Color Genotype: ee Aa2

**Service Sire: Snowmass  
 Moonlight Oblivion**  
 Color Genotype: ee AA  
 Status: Breeding  
 Due Date: TBD

	AFD	SD	CV	%.30	SL	FW
23 Grid Hist	19.4	4.7	24.2	2.5	117	5.2
22 EPD PR	8%	13%		21%	74%	21%



**Breeding Notes:** This female's fleece has remained really fine even as she grew like a weed. Talk about capacity: Her broad, heavy, capacious frame should make popping out crias a breeze. And this daughter of National Supreme Champ Snowmass D'Angelo has an excellent genotype to produce fine, high frequency crimp style fleeces in her offspring. Note she covers black! We bred her to the Snowmass Oblivion son Moonlight Oblivion because, well, we love him – check him out on page 23. The COI on this pairing is 0.3%



## 29. Snowmass Sunkissed Skye (C)

Sire: Snowmass Rock Solid

Dam: Snowmass Skye

DOB: 9/19/21

Color: MB Spring Wt: 126.8

Color Genotype: EE Aa3

Service Sire: Accoyo

America Morpheus

Color Genotype: ee AA

Status: Breeding

Due Date: TBD

	AFD	SD	CV	%>30	SL	FW
23 Grid Hist	22.1	5.7	25.6	8.0	127	6.2
22 EPD PR	9%	13%		16%	98%	24%



**Breeding Notes:** We have a sneaking suspicion the pairing of Sunkissed Skye and Morpheus will produce one of the best crias we have in 2024. This female is just so phenotypically attractive and her high frequency, well organized fleece style is very complimentary to that of Morpheus. He will add incremental density and uniformity and she will ensure the cria is both good-looking and dark in color – in fact, her color genotype indicates that she will never produce a light cria. This is a valuable package. The cria's COI will be 3.1%.

## 30. Snowmass Wedding Syrah (C)

Sire: Snowmass Enchanted Wave

Dam: Snowmass Syrah

DOB: 8/26/21

Color: BG Spring Wt: 113.5

Color Genotype: ee Aa1

Service Sire: Snowmass

Andean Divinity

Color Genotype: EE AA

Status: Breeding

Due Date: TBD

	AFD	SD	CV	%.30	SL	FW
23 Grid Hist	20.8	4.3	20.7	1.7	152	9.3
22 EPD PR	10%	14%		21%	4%	3%



**Breeding Notes:** Wedding Syrah's white fleece is good enough to make her an asset to our white breeding effort but we could not resist breeding her to Andean Divinity for color this year. We think there is a decent chance of a roan from this pairing; otherwise you will get a solid fawn or brown. Wedding Syrah covers black with an a1 allele which gives you great options to use her for silver grey and black breeding also should you wish. The COI for this pairing is 1.6%.

## 31. Accoyo America Polar Sunrise (N)

Sire: Accoyo America Polar Storm

Dam: Accoyo America Sunna

DOB: 6/7/21

Color: WH Spring Wt: 111.7

Color Genotype: ee Aa1

**Service Sire: Snowmass**

**Sierrian Sun**

Color Genotype: ee AA

Status: Breeding

Due Date: TBD

	AFD	SD	CV	%>30	SL	FW
23 Grid Hist	21.5	4.4	20.3	2.6	119	7.0
22 EPD PR	7%	2%		19%	64%	5%



**Breeding Notes:** This is another one where it is hard to know where to start. Polar Sunrise is a Polar Storm daughter out of a Snowmass Defiance daughter and she is breeding to Snowmass Sierrian Sun, a male who is less well-known only because he is younger – well, and because we decided to “wait and see” how his first crias turned out and thus skipped a year in his breeding rotation. Long story short they turned out totally awesome and we promoted him to the top of the herdsire lineup. You want this one. COI 4.2%. Note Polar Sunrise also covers black.

## 32. Snowmass Victorian Amber (C)

Sire: Snowmass Enchanted Wave

Dam: Snowmass Victorian Velvet

DOB: 8/22/21

Color: DB Spring Wt: 113.1

Color Genotype: NR

**Service Sire: Snowmass**

**Best Bet**

Color Genotype: Ee Aa3

Status: Breeding

Due Date: TBD

	AFD	SD	CV	%.30	SL	FW
23 Grid Hist	21.4	5.4	25.3	6.5	114	6.6
22 EPD PR	8%	17%		20%	50%	26%



**Breeding Notes:** This female is offered at a discount to what we feel is the right price because her first color genotyping results came back with an unread error and we haven't gotten around to submitting a new blood card. Chances are good based on her color that she does not carry dilution but we can't be sure without those results. The breeding to Best Bet is very valuable -- he will add the genetics for staple growth rates/fleece weight and micron-adjusted uniformity while she contributes fineness. The COI for this breeding is 7.9%. Great opportunity here.





# Snowmass Maiden Sale Service Sires

**Snowmass Andean  
Divinity**



Proven champion fawn male that is producing modern grey offspring as well as solid offspring from solid dams. Excellent for uniformity and fleece weight. High accuracy EPDs. Color genotype EE AA.

**Snowmass  
Bernacelli**



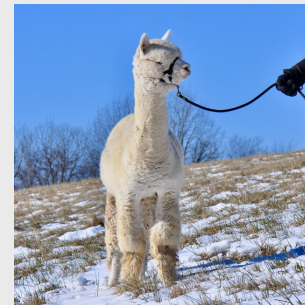
Multiple champion white male whose crias are notable for their brightness, staple length and excellent head styles among other traits. Superior micron adjusted uniformity and fleece weight. Color genotype ee AA.

**Snowmass  
Best Bet**



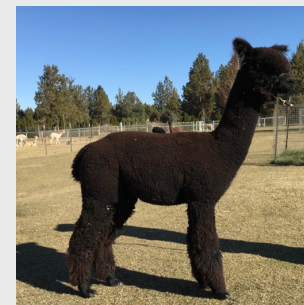
A fawn Oblivion son with the best dark fleece on the farm. Staple length, density and micron uniformity are notable traits among his crias. Covers black and has produced grey. Color genotype Ee Aa3.

**Snowmass Best  
Oracle**



His EPDs for fineness, fleece weight and density are truly elite and his own fleece boasts a high frequency, densely-stapling style. His first crias have begun to arrive this year. Color genotype ee AA.

**Estates Sakima's  
Braxton**



Many-time champion, proven true black male with an EE a2a2 color genotype. Balanced genetics for fineness and uniformity with a high frequency style for the color..



# Snowmass Maiden Sale Service Sires

**Snowmass Divine  
Optics**



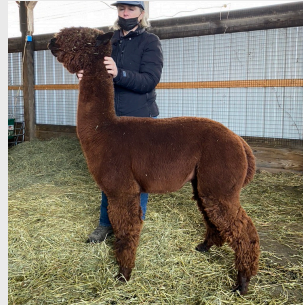
Champion light fawn with an ee a1a3 color genotype. His first crias have been both solid and modern grey and show outstanding fleece structure. Fineness, length and density are his key strengths.

**Snowmass Elite  
Symphony**



Outstanding for fineness, uniformity and staple length with an especially typey look. So good he'll have great grandsons working before we let him retire. Color genotype ee AA.

**Snowmass  
Fortune's Magic**



Highly valued for his genotype for fineness, micron uniformity and density. He does not carry dilution and covers black, which has made him quite busy this year. Beautiful head style, bone and coverage.

**Snowmass Glacial  
Symphony**



One of our best Elite Symphony sons now working, with outstanding high accuracy EPDs for fineness, micron uniformity, staple length and fleece weight. First crias are hitting the ground now. Color genotype ee AA.

**Snowmass Heavens  
Paramount**



Producing colored offspring with very dense, well-structured fleeces with a high frequency crimp style. His offspring are among our highest-priced sellers. He has an EE AA color genotype.





# Snowmass Maiden Sale Service Sires

**Snowmass Lover's  
Spartan**



This male's first crias included the 2023 National Light Supreme Champion along with other championship winners. In heavy use to produce both white and colored offspring. Ee AA color genotype.

**Snowmass  
Marvelous Oblivion**



Multi-champion white Oblivion son with perhaps the best white fleece on the farm right now. Fineness, uniformity, crimp style, density – this male's list of genotypic advantages goes on and on. Color genotype ee Aa3.

**Snowmass  
Moonlight Oblivion**



Another stunning Oblivion son with a beautiful head and heavy frame, as well as an especially good genotype for staple length and micron-adjusted uniformity. His first crias are arriving now. His color genotype is ee AA.

**Accoyo America  
Morpheus**



Such a secret weapon we don't even have a current picture! Our bad. The last male that Snowmass Defiance produced for us, this male is a treasure for fineness and uniformity with high density. Color genotype ee AA.

**Snowmass Royal  
Impact**



A Polar Storm son out of an Elite Legend daughter, his first crias are dense, bright, and long stapling with amazing head styles – they are easy to spot even in a crowd. Color genotype ee Aa1.



# Snowmass Maiden Sale Service Sires

**Snowmass Royal  
Wave**



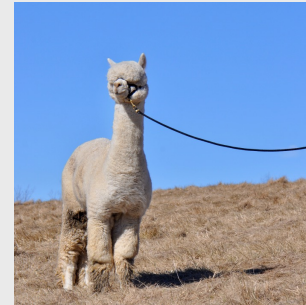
The first of his famous sire's multiple heirs, Royal Wave has an Ee Aa1 genotype and has produced beautiful dark crias for us in his first season. Brightness, fineness and organization are plusses here, and staple length is outstanding.

**Snowmass Seven  
Solutions**



We couldn't wait to start this amazing champion fawn Snowmass Sub-Seven son. This is the male for micron-adjusted uniformity, structure and staple length. His color genotype is Ee AA.

**Snowmass  
Sierrian Sun**



Even at a farm replete with top white sires this male stands out. The ultra bright, densely stapled and uniform fleeces of his offspring have us using him as much as we can. His color genotype is ee AA.





# Previous Crias From 2023 Bred Maiden Service Sires



2022 Lover's Spartan



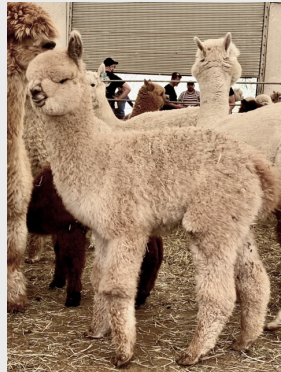
2022 Heaven's Paramount



2023 Divine Optics



2022 Royal Impact



2022 Andean Divinity



2022 Sierrian Sun



2022 Lover's Spartan



2022 Best Bet



2022 Bernacelli



2023 Braxton



2023 Divine Optics



2022 Royal Impact



2021 Bernacelli



# Breeding and Sale Terms: Read These

- When you agree to purchase an animal from the bred maiden sale we will provide you with our standard sales contract which includes the opportunity for a veterinary inspection as well as a standard fertility guarantee for the female.
- If you intend to keep your female at a farm located in the United States, you may at your option finance her purchase for one year. There will be no interest charged. Payment will be due in four equal quarterly payments, the first of which will represent your deposit.
- You may leave your female at our farm until 60 days post-confirmation of her pregnancy at no additional charge. She will stay with the service sire or, when that is not possible, a high-quality cover sire to help ensure she is pregnant when she leaves.
- Because our females are pasture bred, their exact due dates are uncertain. We provide due dates that represent the earliest date at which the female could be due based on when she was introduced to the service sire's field. You should expect delivery of the cria within a couple of months of that date.
- If your female is confirmed pregnant but fails to deliver a live cria, you may return her during our next breeding season to be rebred to the same sire or the closest alternative we have available for breeding at that time. We reserve the right to define and choose the closest alternative male in cases where the same sire is not available for the rebreeding. If you expose her to another male in the interim, this rebreeding offer is null and void, but our fertility guarantee is unaffected.
- It is possible that a female may not be pregnant at the close of our breeding season in late November. If yours is not and your farm is within 400 miles of either of ours, you will take her to your farm for the winter and arrange to return her to us during our next breeding season to breed to the male to which she was exposed or the closest available alternative male, which we again reserve the right to define and choose. If you expose her to another male in the interim, this breeding offer is null and void, but our fertility guarantee is unaffected. We will board open maidens going to farms more than 400 miles over the winter at no charge so that they can be bred at the beginning of the following season.
- Our breeding season at the Canastota farm runs from the last week in June until the end of November each year. We will not be able to accept females for breeding or rebreeding in Canastota outside of that time period.
- Our breeding season in North Salem runs from the third week in May until the end of December each year. We will not be able to accept females for breeding or rebreeding in North Salem outside of that time period.





## To Purchase, Please Contact:

Lynn Edens  
[lynn@lcfalpacas.com](mailto:lynn@lcfalpacas.com)  
917-952-5184

Susanne Bienenstock  
[susanne@lcfalpacas.com](mailto:susanne@lcfalpacas.com)  
914-318-0893

Animals will be sold on a first-come basis. We will accept offers to purchase in live conversation, text or email, but please do not leave phone messages as these may not be received in a timely way.

Thank you in advance for your consideration of our lovely maiden females. Please do not hesitate to contact either of us with questions, comments, or just to say hello. Have a wonderful summer!